

CLACPACK®

The sustainable fixation

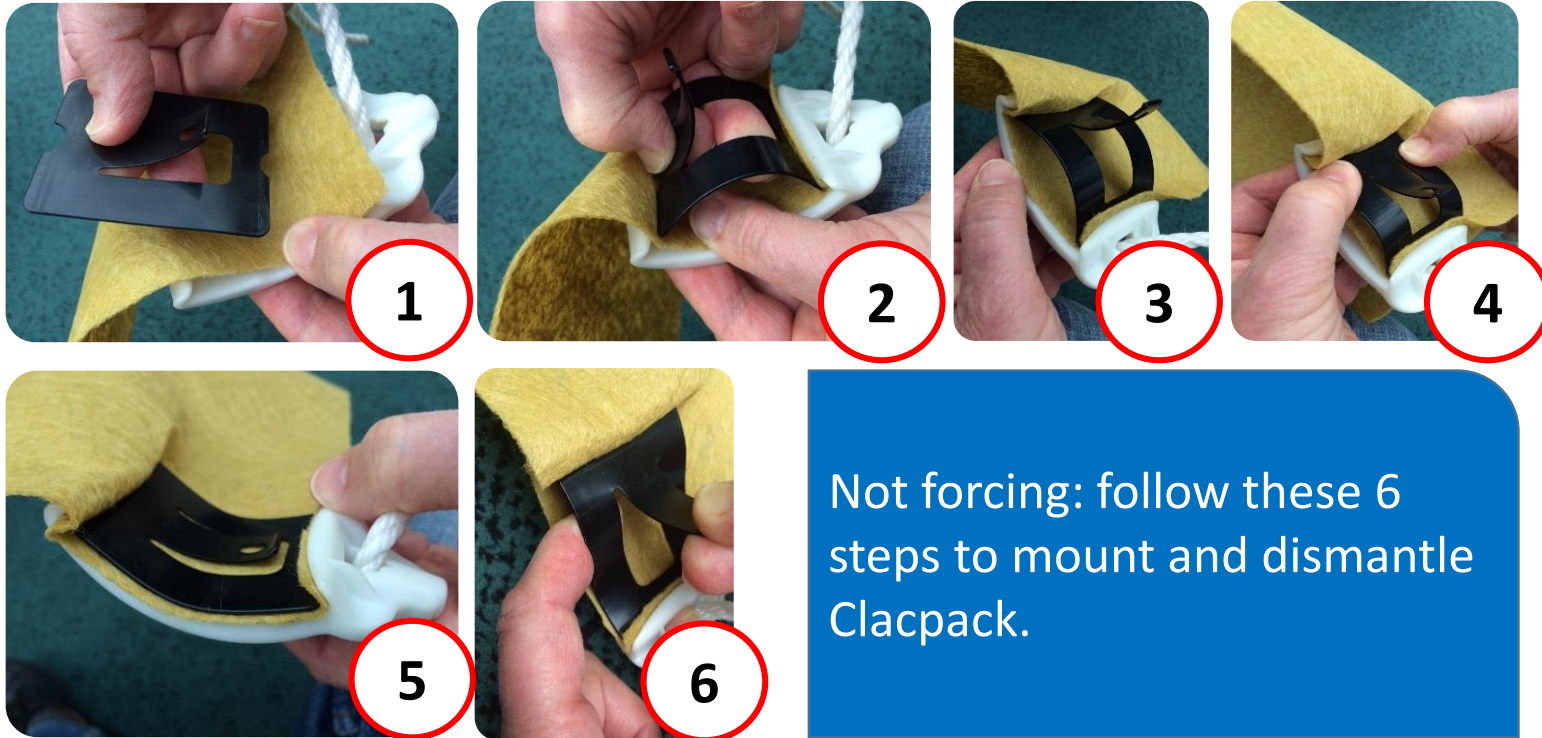


Clacpack®, is the solution for fixing the tarpaulin, with efficiency and for a long period. It comes in two parts: one stiff (white) where the supple (black) is pinching the Subtex.

Clacpack®, doesn't drill the tarpaulin. It last & can be utilized for other applications Necessary to handle a weight of 8 kgs maximum per clacpack. Thanks to clacpack the tarpaulin is tensioned in permanence. No necessity to adjust it.



Steps for fixation of Clacpack® on Subtex®:



Not forcing: follow these 6 steps to mount and dismantle Clacpack.

Advice for installation:

- A kit of 40 Clacpack® is necessary for one tarpaulin.
- Fix one Clacpack® spaced 1m50 of the other one, with a weight of 7-8 kg you can take a Silobag 27×70cm
- The weight do not touch the ground to tensionned the tarpaulin
- White part of Clacpack under the tarpaulin, the black one outside



19 Rue du Pont Colbert
78000 Versailles FRANCE

Tél: 01.39.02.21.21

WWW.VELITEX-EXPORT.COM

Distributor :